

Condition Report

This report is to be filled out by qualified personnel of the *Exhibitor*, for each *Work* included in the *Exhibition*. Even if the *Works* are in excellent and/or good condition, that status needs to be stated in writing for each individual *Work*. If any scratches or obvious wear or damage have occurred to a *Work(s)*, that should be noted in the space provided. The region of the wear or damage can be marked on the image provided for each individual *Work*, for added clarification.

A completed condition report shall then be scanned and a copy sent, electronically, to the *Organizer*. Additional photograph(s) should accompany the report if any damage is detected/noted, as indicated in the *Agreement*. The hard copy of the condition report shall be signed and dated and left within the Exhibition binder so that future *Exhibitors* may compare to the state of the *Works* upon delivery to their venue.

_____ signature _____ date

_____ (print name)

_____ (organization/venue)



Favored, 2015,
PVC Relief Print,
5" x 6 5/8"
(image size)
" x " (frame size)

General Condition: _____

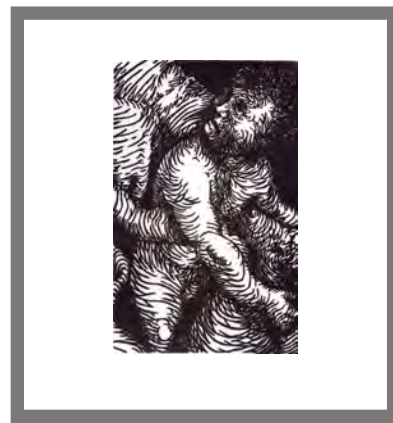
Special Notes of Concern:

(frame) _____

(plexiglas) _____

(backing) _____

(artwork) _____



Legacy, 2010,
Linoleum Block
Print,
6" x 3 7/8"
(image size)
" x " (frame size)

General Condition: _____

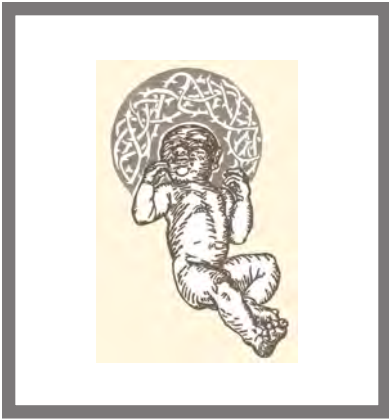
Special Notes of Concern:

(frame) _____

(plexiglas) _____

(backing) _____

(artwork) _____

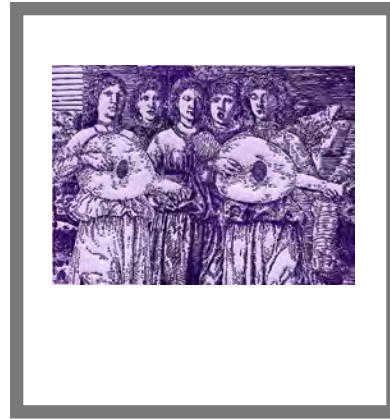


**The Word Made
Flesh**, 2004,
Two-Color
Linoleum Block
Print,
6 1/2" x 4"
(image size)
" x " (frame size)

General Condition: _____

Special Notes of Concern:

(frame) _____
(plexiglas) _____
(backing) _____
(artwork) _____



Seraphic Song,
2014/15, PVC
Relief Print,
4 7/8" x 6 3/4"
(image size)
" x " (frame size)

General Condition: _____

Special Notes of Concern:

(frame) _____
(plexiglas) _____
(backing) _____
(artwork) _____

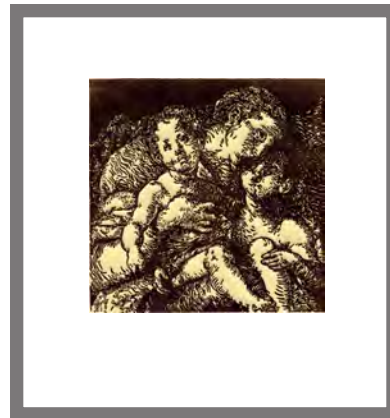


Pieta, 2008,
Linoleum Block
Print,
6 3/4" x 5 1/2"
(image size)
" x " (frame size)

General Condition: _____

Special Notes of Concern:

(frame) _____
(plexiglas) _____
(backing) _____
(artwork) _____



Ponder, 2011,
Linoleum Block
Print,
5 1/4" x 5 1/4"
(image size)
" x " (frame size)

General Condition: _____

Special Notes of Concern:

(frame) _____
(plexiglas) _____
(backing) _____
(artwork) _____



Evacuation
2002,
Wood Block
16" x 11" (frame
size)

General Condition: _____

Special Notes of Concern:

(frame) _____
(plexiglas) _____
(backing) _____
(artwork) _____

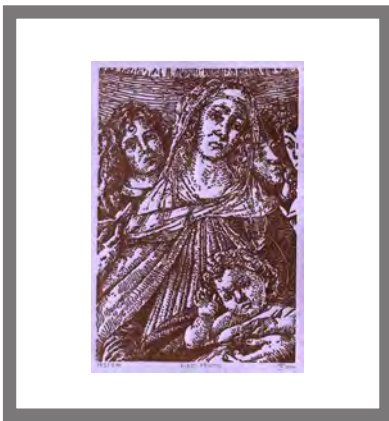


Incarnation
2002,
Wood Block
14" x 6 1/2"
(frame size)

General Condition: _____

Special Notes of Concern:

(frame) _____
(plexiglas) _____
(backing) _____
(artwork) _____



First Fruits, 2016,
PVC Relief Print,
6" x 4"
(image size)
" x " (frame size)

General Condition: _____

Special Notes of Concern:

(frame) _____
(plexiglas) _____
(backing) _____
(artwork) _____



Annunciation,
2013, PVC Relief
Print,
6" x 4"
(image size)
" x " (frame size)

General Condition: _____

Special Notes of Concern:

(frame) _____
(plexiglas) _____
(backing) _____
(artwork) _____



Complicity
2002,
Wood Block
16 1/2" x 11 1/2"
(frame size)

General Condition: _____

Special Notes of Concern:
(frame) _____
(plexiglas) _____
(backing) _____
(artwork) _____



**Stations of the Cross:
Entombment**
2003,
Wood Block
17 1/4" x 12 1/2"
(frame size)

General Condition: _____

Special Notes of Concern:
(frame) _____
(plexiglas) _____
(backing) _____
(artwork) _____



Accusation
2003,
Wood Block
8 5/8" x 11 1/8"
(frame size)

General Condition: _____

Special Notes of Concern:
(frame) _____
(plexiglas) _____
(backing) _____
(artwork) _____



Appearance
2009,
Wood Block
8 1/4 x 13 1/2"
(frame size)

General Condition: _____

Special Notes of Concern:
(frame) _____
(plexiglas) _____
(backing) _____
(artwork) _____



Sorrow (II)
2009,
Wood Block
7 1/2" x 16" (frame size)



Sorrow (II)
2009,
Wood Block
7 1/2" x 16" (frame size)

General Condition: _____

Special Notes of Concern:

(frame) _____

(plexiglas) _____

(backing) _____

(artwork) _____

General Condition: _____

Special Notes of Concern:

(frame) _____

(plexiglas) _____

(backing) _____

(artwork) _____



Preparation
2006,
Wood Block
8 5/8" x 11" (frame size)



Elemental
2002,
Wood Block
9 1/8" x 12 1/2" (frame size)

General Condition: _____

Special Notes of Concern:

(frame) _____

(plexiglas) _____

(backing) _____

(artwork) _____

General Condition: _____

Special Notes of Concern:

(frame) _____

(plexiglas) _____

(backing) _____

(artwork) _____

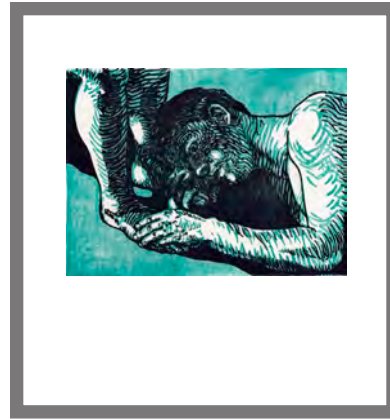


Sorrow (II), 2009,
Two-Color
Woodcut,
4 3/4" x 12 7/8"
(image size)
10 1/2" x 18 1/2"
(frame size)

General Condition: _____

Special Notes of Concern:

(frame) _____
(plexiglas) _____
(backing) _____
(artwork) _____



Preparation, 2006,
Two-Color
Woodcut,
6 1/4" x 8 3/8"
(image size)
14 1/8" x 15 1/8"
(frame size)

General Condition: _____

Special Notes of Concern:

(frame) _____
(plexiglas) _____
(backing) _____
(artwork) _____



Exemplar, 2001,
Two-Color
Woodcut,
7 1/2" x 9 1/4"
(image size)
13 1/2" x 14 3/4"
(frame size)

General Condition: _____

Special Notes of Concern:

(frame) _____
(plexiglas) _____
(backing) _____
(artwork) _____



Elemental, 2002,
Two-Color
Woodcut,
6 7/8" x 9 7/8"
(image size)
" x " (frame size)

General Condition: _____

Special Notes of Concern:

(frame) _____
(plexiglas) _____
(backing) _____
(artwork) _____



Accusation, 2003,
Two-Color
Woodcut,
6 1/2" x 8 5/8"
(image size)
12 1/2" x 14"
(frame size)

General Condition: _____

Special Notes of Concern:

(frame) _____
(plexiglas) _____
(backing) _____
(artwork) _____

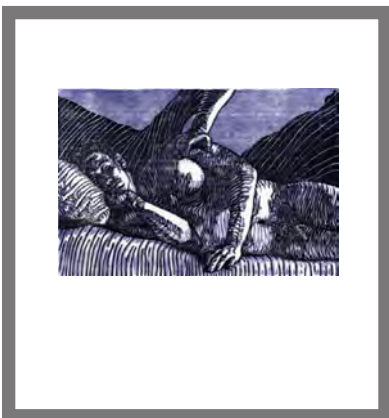


Appearance,
2009, Two-Color
Woodcut,
6" x 11"
(image size)
12 1/8" x 14"
(frame size)

General Condition: _____

Special Notes of Concern:

(frame) _____
(plexiglas) _____
(backing) _____
(artwork) _____

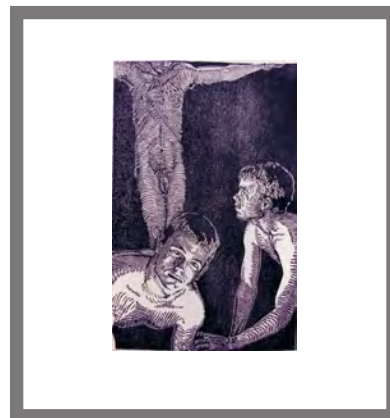


Calm, 2005,
Two-Color
Woodcut,
8 7/8" x 13 1/2"
(image size)
" x " (frame size)

General Condition: _____

Special Notes of Concern:

(frame) _____
(plexiglas) _____
(backing) _____
(artwork) _____



Complicity, 2002,
Two-Color
Woodcut,
14 1/4" x 9 3/4"
(image size)
" x " (frame size)

General Condition: _____

Special Notes of Concern:

(frame) _____
(plexiglas) _____
(backing) _____
(artwork) _____



Madonna of the Word, 2007,
Two-Color Linoleum Block Print,
7 7/8" x 6"
(image size)
" x " (frame size)

General Condition: _____

Special Notes of Concern:

(frame) _____
(plexiglas) _____
(backing) _____
(artwork) _____

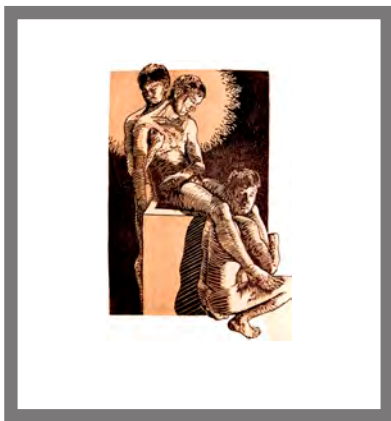


Incarnation, 2002,
Two-Color Woodcut,
13" x 5 1/2"
(image size)
" x " (frame size)

General Condition: _____

Special Notes of Concern:

(frame) _____
(plexiglas) _____
(backing) _____
(artwork) _____



**Stations of the Cross:
Entombment**, 2003, Two-Color
Woodcut,
14 1/2" x 10 1/2"
(image size)
" x " (frame size)

General Condition: _____

Special Notes of Concern:

(frame) _____
(plexiglas) _____
(backing) _____
(artwork) _____



Evacuation, 2002,
Two-Color Woodcut,
14" x 8 1/2"
(image size)
21" x 17"
(frame size)

General Condition: _____

Special Notes of Concern:

(frame) _____
(plexiglas) _____
(backing) _____
(artwork) _____