



**Accedite**  
(Draw Near), 2017,  
Color Viscosity  
Intaglio, 8 3/4" x 7  
7/8" (image size)  
18 5/8" x 15 5/8"  
(frame size)

General Condition: \_\_\_\_\_

\_\_\_\_\_  
\_\_\_\_\_  
\_\_\_\_\_

Special Notes of Concern:

(frame) \_\_\_\_\_

(plexiglas) \_\_\_\_\_

(backing) \_\_\_\_\_

(artwork) \_\_\_\_\_



**Accedite**  
(Draw Near), 2017,  
Color Viscosity  
Intaglio, 8 3/4" x 7  
7/8" (image size)  
18 5/8" x 15 5/8"  
(frame size)

General Condition: \_\_\_\_\_

\_\_\_\_\_  
\_\_\_\_\_  
\_\_\_\_\_

Special Notes of Concern:

(frame) \_\_\_\_\_

(plexiglas) \_\_\_\_\_

(backing) \_\_\_\_\_

(artwork) \_\_\_\_\_



**Superaedificat**  
(He Builds), 2017,  
Color Viscosity  
Intaglio, 8 3/4" x 7  
7/8" (image size)  
18 5/8" x 15 5/8"  
(frame size)

General Condition: \_\_\_\_\_

\_\_\_\_\_  
\_\_\_\_\_  
\_\_\_\_\_

Special Notes of Concern:

(frame) \_\_\_\_\_

(plexiglas) \_\_\_\_\_

(backing) \_\_\_\_\_

(artwork) \_\_\_\_\_



**Superaedificat**  
(He Builds), 2017,  
Color Viscosity  
Intaglio, 8 3/4" x 7  
7/8" (image size)  
18 5/8" x 15 5/8"  
(frame size)

General Condition: \_\_\_\_\_

\_\_\_\_\_  
\_\_\_\_\_  
\_\_\_\_\_

Special Notes of Concern:

(frame) \_\_\_\_\_

(plexiglas) \_\_\_\_\_

(backing) \_\_\_\_\_

(artwork) \_\_\_\_\_



**Fix these words  
in your hearts  
and minds**, 2017,  
Color Viscosity  
Intaglio, 8 3/4" x 7  
7/8" (image size)  
18 5/8" x 15 5/8"  
(frame size)

General Condition: \_\_\_\_\_

\_\_\_\_\_  
\_\_\_\_\_  
\_\_\_\_\_

Special Notes of Concern:

(frame) \_\_\_\_\_

(plexiglas) \_\_\_\_\_

(backing) \_\_\_\_\_

(artwork) \_\_\_\_\_



**Superaedificat**  
(He Builds), 2017,  
Color Viscosity  
Intaglio, 8 3/4" x 7  
7/8" (image size)  
18 5/8" x 15 5/8"  
(frame size)

General Condition: \_\_\_\_\_

\_\_\_\_\_  
\_\_\_\_\_  
\_\_\_\_\_

Special Notes of Concern:

(frame) \_\_\_\_\_

(plexiglas) \_\_\_\_\_

(backing) \_\_\_\_\_

(artwork) \_\_\_\_\_



**Fix these words  
in your hearts  
and minds**, 2017,  
Color Viscosity  
Intaglio, 8 3/4" x 7  
7/8" (image size)  
18 5/8" x 15 5/8"  
(frame size)

General Condition: \_\_\_\_\_

\_\_\_\_\_  
\_\_\_\_\_  
\_\_\_\_\_

Special Notes of Concern:

(frame) \_\_\_\_\_

(plexiglas) \_\_\_\_\_

(backing) \_\_\_\_\_

(artwork) \_\_\_\_\_



**Teach them to  
your children**,  
2017, Color Vis-  
cosity Intaglio,  
4 3/8" x 4"  
(image size)  
15 5/8" x 12 5/8"  
(frame size)

General Condition: \_\_\_\_\_

\_\_\_\_\_  
\_\_\_\_\_  
\_\_\_\_\_

Special Notes of Concern:

(frame) \_\_\_\_\_

(plexiglas) \_\_\_\_\_

(backing) \_\_\_\_\_

(artwork) \_\_\_\_\_



**Bind them on your foreheads,**  
2017, Color Viscosity Intaglio,  
4 3/8" x 4"  
(image size)  
15 5/8" x 12 5/8"  
(frame size)

General Condition: \_\_\_\_\_

\_\_\_\_\_  
\_\_\_\_\_  
\_\_\_\_\_

Special Notes of Concern:

(frame) \_\_\_\_\_

(plexiglas) \_\_\_\_\_

(backing) \_\_\_\_\_

(artwork) \_\_\_\_\_



**Tie them as symbols on your hands,**  
2017,  
Color Viscosity Intaglio,  
4 3/8" x 4"  
(image size)  
15 5/8" x 12 5/8"  
(frame size)

General Condition: \_\_\_\_\_

\_\_\_\_\_  
\_\_\_\_\_  
\_\_\_\_\_

Special Notes of Concern:

(frame) \_\_\_\_\_

(plexiglas) \_\_\_\_\_

(backing) \_\_\_\_\_

(artwork) \_\_\_\_\_



**Write them on the door frames of your houses,**  
2017, Color Viscosity Intaglio,  
4 3/8" x 4"  
(image size)  
15 5/8" x 12 5/8"  
(frame size)

General Condition: \_\_\_\_\_

\_\_\_\_\_  
\_\_\_\_\_  
\_\_\_\_\_

Special Notes of Concern:

(frame) \_\_\_\_\_

(plexiglas) \_\_\_\_\_

(backing) \_\_\_\_\_

(artwork) \_\_\_\_\_



**These commandments are to be upon your hearts,**  
2017, Color Viscosity Intaglio,  
4 3/8" x 4"  
(image size)  
15 5/8" x 12 5/8"  
(frame size)

General Condition: \_\_\_\_\_

\_\_\_\_\_  
\_\_\_\_\_  
\_\_\_\_\_

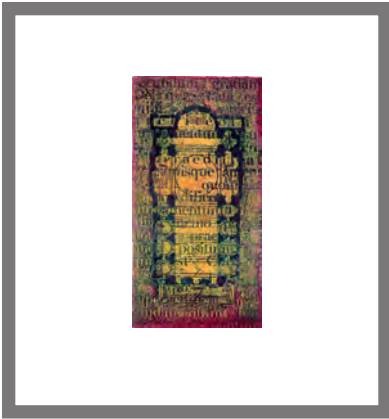
Special Notes of Concern:

(frame) \_\_\_\_\_

(plexiglas) \_\_\_\_\_

(backing) \_\_\_\_\_

(artwork) \_\_\_\_\_



**Fundamentum (Foundation)**, 2016, Color Viscosity Intaglio, 5" x 2 1/2" (image size) 15 5/8" x 12 5/8" (frame size)

General Condition: \_\_\_\_\_

\_\_\_\_\_  
\_\_\_\_\_  
\_\_\_\_\_

Special Notes of Concern:

(frame) \_\_\_\_\_  
(plexiglas) \_\_\_\_\_  
(backing) \_\_\_\_\_  
(artwork) \_\_\_\_\_



**Dwelling**, 2015, Color Viscosity Intaglio, 5 1/2" x 4 3/4" (image size) 15 5/8" x 12 5/8" (frame size)

General Condition: \_\_\_\_\_

\_\_\_\_\_  
\_\_\_\_\_  
\_\_\_\_\_

Special Notes of Concern:

(frame) \_\_\_\_\_  
(plexiglas) \_\_\_\_\_  
(backing) \_\_\_\_\_  
(artwork) \_\_\_\_\_



**Built on the Foundation**, 2014, Color Viscosity Intaglio, 4 7/8" x 2 3/8" (image size) 15 5/8" x 12 5/8" (frame size)

General Condition: \_\_\_\_\_

\_\_\_\_\_  
\_\_\_\_\_  
\_\_\_\_\_

Special Notes of Concern:

(frame) \_\_\_\_\_  
(plexiglas) \_\_\_\_\_  
(backing) \_\_\_\_\_  
(artwork) \_\_\_\_\_



**He will be the Foundation**, 2014, Color Viscosity Intaglio, 4 7/8" x 2 3/8" (image size) 15 5/8" x 12 5/8" (frame size)

General Condition: \_\_\_\_\_

\_\_\_\_\_  
\_\_\_\_\_  
\_\_\_\_\_

Special Notes of Concern:

(frame) \_\_\_\_\_  
(plexiglas) \_\_\_\_\_  
(backing) \_\_\_\_\_  
(artwork) \_\_\_\_\_



**Et Exaltemus Nomen (Is Right)**, 2017, Color Viscosity Intaglio, 5" x 4"  
(image size)  
15 5/8" x 12 5/8"  
(frame size)

General Condition: \_\_\_\_\_

\_\_\_\_\_  
\_\_\_\_\_  
\_\_\_\_\_

Special Notes of Concern:

(frame) \_\_\_\_\_  
(plexiglas) \_\_\_\_\_  
(backing) \_\_\_\_\_  
(artwork) \_\_\_\_\_



**Loquebatur (Speaking)**, 2017, Color Viscosity Intaglio, 5" x 4"  
(image size)  
15 5/8" x 12 5/8"  
(frame size)

General Condition: \_\_\_\_\_

\_\_\_\_\_  
\_\_\_\_\_  
\_\_\_\_\_

Special Notes of Concern:

(frame) \_\_\_\_\_  
(plexiglas) \_\_\_\_\_  
(backing) \_\_\_\_\_  
(artwork) \_\_\_\_\_



**Enim Aliud Nemo Potest (For No One is Able)**, 2017, Color Viscosity Intaglio, 5" x 4"  
(image size)  
15 5/8" x 12 5/8"  
(frame size)

General Condition: \_\_\_\_\_

\_\_\_\_\_  
\_\_\_\_\_  
\_\_\_\_\_

Special Notes of Concern:

(frame) \_\_\_\_\_  
(plexiglas) \_\_\_\_\_  
(backing) \_\_\_\_\_  
(artwork) \_\_\_\_\_



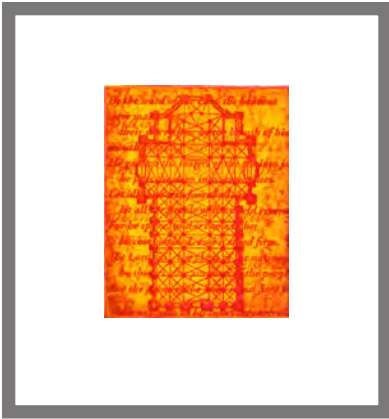
**Pretiosum in Fundamento (Provide a Foundation)**, 2017, Color Viscosity Intaglio, 5" x 4"  
(image size)  
15 5/8" x 12 5/8"  
(frame size)

General Condition: \_\_\_\_\_

\_\_\_\_\_  
\_\_\_\_\_  
\_\_\_\_\_

Special Notes of Concern:

(frame) \_\_\_\_\_  
(plexiglas) \_\_\_\_\_  
(backing) \_\_\_\_\_  
(artwork) \_\_\_\_\_



**By the Word**,  
2017, Color Viscosity Intaglio,  
5" x 4"  
(image size)  
15 5/8" x 12 5/8"  
(frame size)

General Condition: \_\_\_\_\_

\_\_\_\_\_  
\_\_\_\_\_  
\_\_\_\_\_

Special Notes of Concern:

(frame) \_\_\_\_\_  
(plexiglas) \_\_\_\_\_  
(backing) \_\_\_\_\_  
(artwork) \_\_\_\_\_



**Exaudiam Vos Quaeletis (I Will Answer You Seek)**, 2017, Color Viscosity Intaglio,  
5 1/8" x 2 1/2"  
(image size)  
15 5/8" x 12 5/8"  
(frame size)

General Condition: \_\_\_\_\_

\_\_\_\_\_  
\_\_\_\_\_  
\_\_\_\_\_

Special Notes of Concern:

(frame) \_\_\_\_\_  
(plexiglas) \_\_\_\_\_  
(backing) \_\_\_\_\_  
(artwork) \_\_\_\_\_



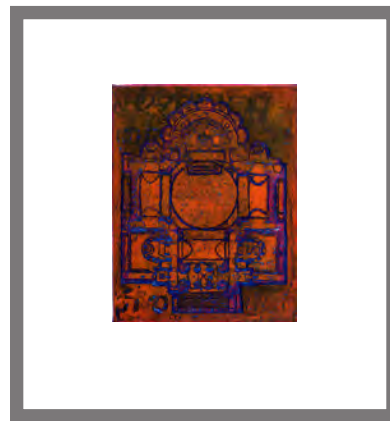
**Were I To Speak**,  
2017, Color Viscosity Intaglio,  
4 1/2" x 4"  
(image size)  
15 5/8" x 12 5/8"  
(frame size)

General Condition: \_\_\_\_\_

\_\_\_\_\_  
\_\_\_\_\_  
\_\_\_\_\_

Special Notes of Concern:

(frame) \_\_\_\_\_  
(plexiglas) \_\_\_\_\_  
(backing) \_\_\_\_\_  
(artwork) \_\_\_\_\_



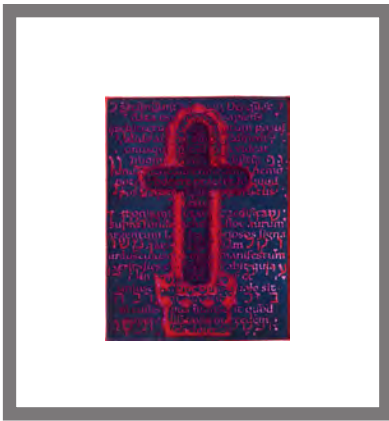
**Musad (Foundation)**,  
2017, Color Viscosity Intaglio,  
4 1/2" x 4"  
(image size)  
15 5/8" x 12 5/8"  
(frame size)

General Condition: \_\_\_\_\_

\_\_\_\_\_  
\_\_\_\_\_  
\_\_\_\_\_

Special Notes of Concern:

(frame) \_\_\_\_\_  
(plexiglas) \_\_\_\_\_  
(backing) \_\_\_\_\_  
(artwork) \_\_\_\_\_



**Architectus  
Fundamentum  
(Master Builder),**  
2017, Color Vis-  
cosity Intaglio,  
4" x 3"  
(image size)  
15 5/8" x 12 5/8"  
(frame size)

General Condition: \_\_\_\_\_

\_\_\_\_\_  
\_\_\_\_\_  
\_\_\_\_\_

Special Notes of Concern:

(frame) \_\_\_\_\_

(plexiglas) \_\_\_\_\_

(backing) \_\_\_\_\_

(artwork) \_\_\_\_\_



**Dwell,** 2016, Color  
Viscosity Intaglio,  
4" x 2"  
(image size)  
15 5/8" x 12 5/8"  
(frame size)

General Condition: \_\_\_\_\_

\_\_\_\_\_  
\_\_\_\_\_  
\_\_\_\_\_

Special Notes of Concern:

(frame) \_\_\_\_\_

(plexiglas) \_\_\_\_\_

(backing) \_\_\_\_\_

(artwork) \_\_\_\_\_



**Sure Foundation,**  
2016, Color Vis-  
cosity Intaglio,  
4" x 3"  
(image size)  
15 5/8" x 12 5/8"  
(frame size)

General Condition: \_\_\_\_\_

\_\_\_\_\_  
\_\_\_\_\_  
\_\_\_\_\_

Special Notes of Concern:

(frame) \_\_\_\_\_

(plexiglas) \_\_\_\_\_

(backing) \_\_\_\_\_

(artwork) \_\_\_\_\_



**Things You  
Planned,** 2016,  
Color Viscosity  
Intaglio,  
5" x 4"  
(image size)  
15 5/8" x 12 5/8"  
(frame size)

General Condition: \_\_\_\_\_

\_\_\_\_\_  
\_\_\_\_\_  
\_\_\_\_\_

Special Notes of Concern:

(frame) \_\_\_\_\_

(plexiglas) \_\_\_\_\_

(backing) \_\_\_\_\_

(artwork) \_\_\_\_\_

# Condition Report

This report is to be filled out by qualified personnel of the *Exhibitor*, for each *Work* included in the *Exhibition*. Even if the *Works* are in excellent and/or good condition, that status needs to be stated in writing for each individual *Work*. If any scratches or obvious wear or damage have occurred to a *Work(s)*, that should be noted in the space provided. The region of the wear or damage can be marked on the image provided for each individual *Work*, for added clarification.

A completed condition report shall then be scanned and a copy sent, electronically, to the *Organizer*. Additional photograph(s) should accompany the report if any damage is detected/ noted, as indicated in the *Agreement*. The hard copy of the condition report shall be signed and dated and left within the Exhibition binder so that future *Exhibitors* may compare to the state of the *Works* upon delivery to their venue.

\_\_\_\_\_ signature \_\_\_\_\_ date

\_\_\_\_\_ (print name)

\_\_\_\_\_ (organization/venue)



**Through Flames**,  
2016, Color Viscosity Intaglio,  
5" x 4"  
(image size)  
15 5/8" x 12 5/8"  
(frame size)

General Condition: \_\_\_\_\_

\_\_\_\_\_

\_\_\_\_\_

\_\_\_\_\_

Special Notes of Concern:

(frame) \_\_\_\_\_

(plexiglas) \_\_\_\_\_

(backing) \_\_\_\_\_

(artwork) \_\_\_\_\_



**Measured and Plumb**, 2016,  
Color Viscosity Intaglio,  
4" x 3"  
(image size)  
15 5/8" x 12 5/8"  
(frame size)

General Condition: \_\_\_\_\_

\_\_\_\_\_

\_\_\_\_\_

\_\_\_\_\_

Special Notes of Concern:

(frame) \_\_\_\_\_

(plexiglas) \_\_\_\_\_

(backing) \_\_\_\_\_

(artwork) \_\_\_\_\_